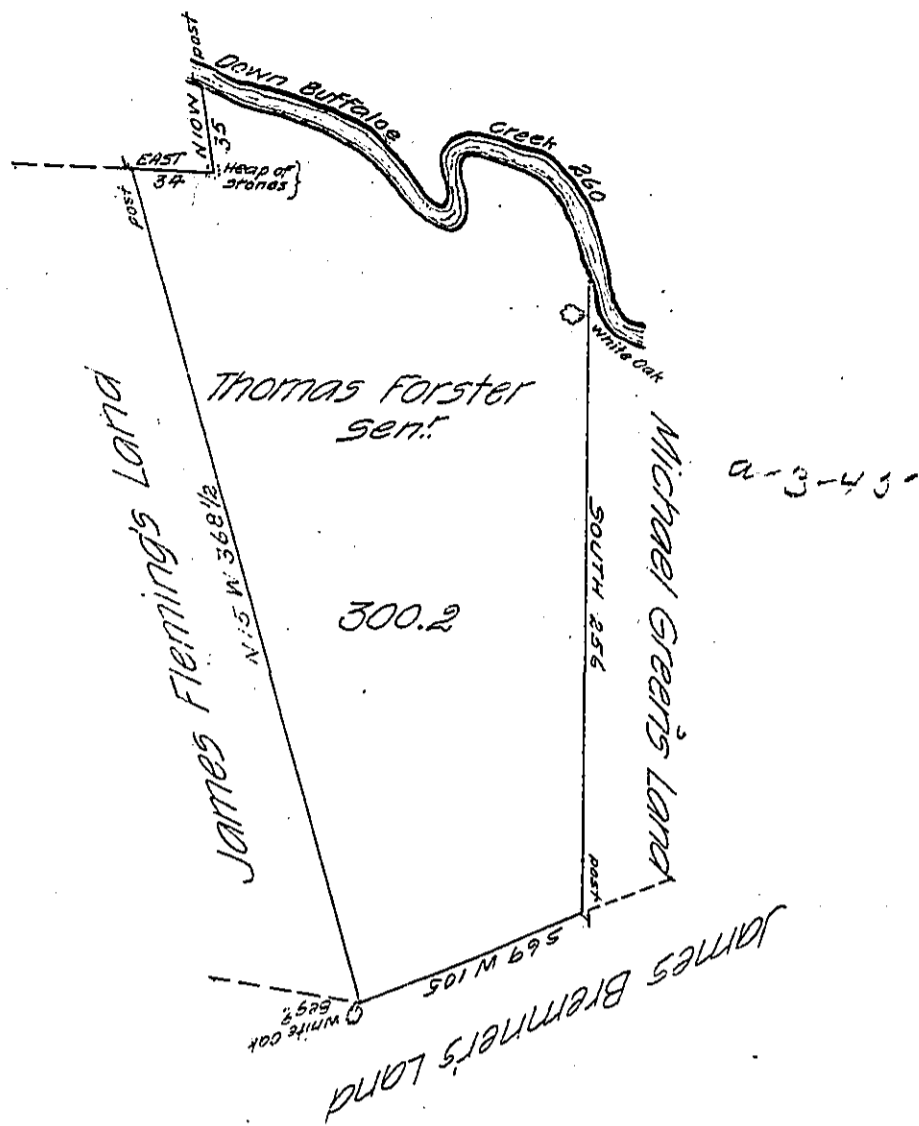


Courses and distances
down Buffalo Creek

- 5 70 E 80
- 5 45 E 40
- N 62 E 13
- N 10 W 25
- 5 81 E 19
- 5 54 E 22
- 5 32 E 28
- 5 14 E 14
- SOUTH 19

260



The draught of a tract of land called — situate on the south side of Buffalo Creek in the County of Berks containing three hundred acres 36 perches with the usual allow of six acres P cent for roads survey'd the 12th day of August Anno Dom 1769 in pursuance of an order of survey to Thomas Forster sen.^r bearing date at Philad^a the 3^d day of April Anno Dom 1769 and numbered 675

To John Lukens Esq S. G. }
of Pennsylvania }

P- W^m Maclay D.S.

IN TESTIMONY that the above is a copy of the original remaining on file in the Department of Internal Affairs of Pennsylvania, made conformably to an Act of Assembly approved the 16th day of February, 1833, I have hereunto set my Hand and caused the Seal of said Department to be affixed at Harrisburg, this thirteenth day of JULY 1906

Loach Brown
Secretary of Internal Affairs.